

CANNABIS ERP

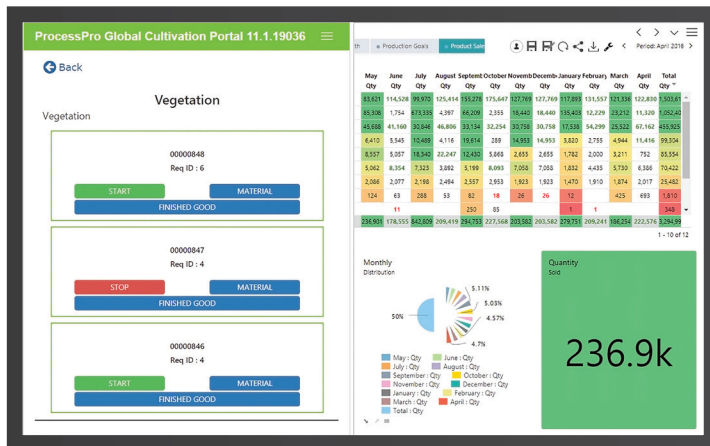
ProcessPro's comprehensive cannabis ERP solution includes full manufacturing, recipe and formulation management, inventory, quality, sales, financial and reporting integration, to automate and streamline your cannabis cultivation and sales operation. Our industry-specific ERP software developed for growers, processors and dispensaries offers a complete enterprise solution to track compliance, cloning, cultivation, extraction, production and infusion in one platform.

Seed-to-Sale Software Functionality

- Lot and plant tracking for regulatory compliance
- Real-time inventory tracking from soil-to-oil or edible
- R&D to support new extractions, infusions and concentrates
- Fully integrated accounting solution
- Established formula and recipe management capability
- Track and manage costs at each step of the process
- Intelligent reporting tools for in-depth analysis and forecasting
- Seamless integration to state-approved systems
- Recall preparedness plans
- Robust user role permissions for security and visibility

What's Unique About ProcessPro?

-  Cultivation Management Solution
-  End-to-End Business Solution
-  Advanced Analytics and Reporting
-  30+ Years of Process Manufacturing Experience
-  Scalability for Growth
-  Mobility and Easy-to-Use Interfaces
-  METRC, BIOTRACK and Leaf Data Systems' Integrations



Integrated CMS

Use ProcessPro's Cultivation Management System and integrated features to easily manage greenhouse operations with the ability to track individual plants and the plant growth stages, optimize growing conditions to increase yields, facilitate quality control testing and maintain recipes to deliver true propagation to harvest capabilities.

Complete Reporting Solution

Analyze, decide and plan faster than ever. Powerful seed-to-sale analytics and reporting platform for data-driven business decisions.



Manage Compliance

- Comprehensive reporting for audits and inspections
- Account for waste, destruction, shrinkage and theft
- Track and trace compliance throughout the supply chain
- Integrated quality control results and reporting
- Perform plant ID and batch reporting



Track Sales and Inventory

- Dashboard reporting with real-time business insight
- Analyze plants, strains, products, customer and supplier performance
- Review cost and margin analysis
- Schedule and automate reports and alerts



Scalable and Built for Growth

- Handle multi-jurisdiction operations
- Manage user rights and tasks for control and security
- Monitor cultivation and operation activity costs
- Capable of handling all of your data reporting needs

Advanced Analytics Package

Featuring a robust data reporting warehouse, Advanced Analytics enables interactive visualization, reporting and analysis of your data from any device (mobile or PC) anywhere in your cannabis business. Graphing, sorting and drilling into your critical business information in any way, combined with comprehensive pre-built reports, metrics and KPIs, provides an essential tool for analyzing your business and grow operations.



Advanced Analytics Offers:

- Pre-built reports, metrics and KPIs with multi-period and year comparisons
- Forecasting, predictive analytics and big data capabilities
- Power and simplicity at the touch of a screen
- Analytics that are tailored and scalable
- Mobile ready out of the box

Implementing ProcessPro has allowed us to capture and analyze the data we need as we continue to scale our business. Through ProcessPro, we've identified cost efficiencies and created processes to further enhance the efforts of our team.

Jason Neely,
Founder and CEO, Stratos