

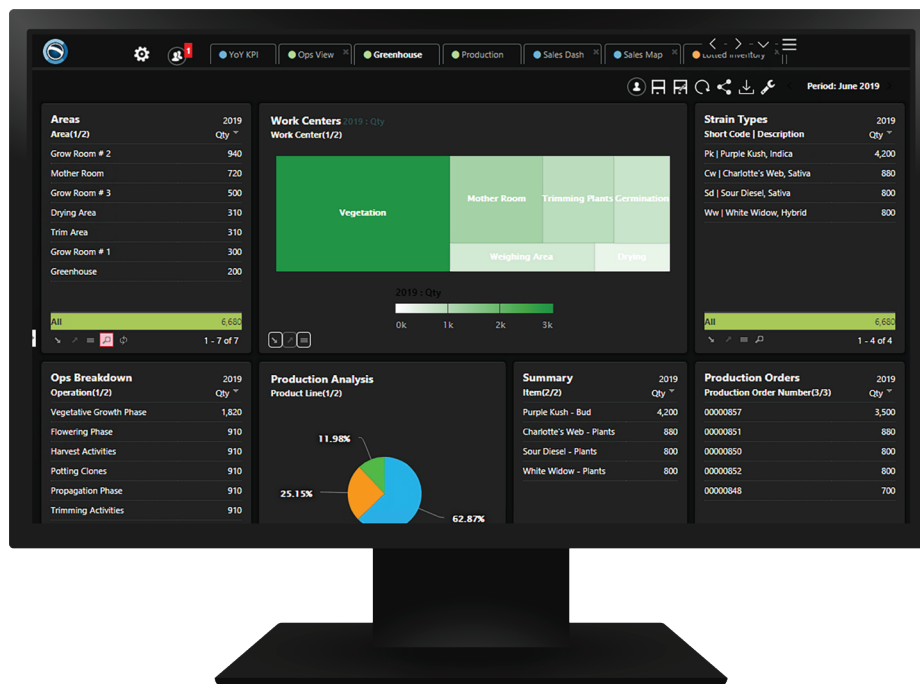
# Cannabis Regulatory Tracking with ProcessPro

In order to maintain a safe and legal supply chain for cannabis and cannabis-related products, proper tracking and transparency measures are essential. State and regulatory body specific cannabis reporting and tracking systems utilize unique identifiers to dynamically track products in real-time throughout the plant growth cycle, harvesting, processing, and handling of the cannabis product. This detailed level of tracking provides regulatory agencies total transparency of the cannabis inventory status at all licensed facilities.

ProcessPro's cannabis ERP solution seamlessly integrates with regulatory tracking systems to provide your business with comprehensive traceability and reporting functionality to meet regulatory compliance. With increased accountability, ensure your data is accurate, timely, and meets your state-specific and multi-state specific and evolving requirements.

Cannabis cultivation, processing, and distribution licensees benefit from the solution's permissions and security measures with user-defined operational and transactional roles and unique IDs to easily report transactions, preventing the mishandling of critical information and authorizing the entry and submission of regulatory reporting data.

- **Manage thousands of plants and packages in multiple locations**
- **Inventory handling and visibility of plants and packages**
- **Track the plant growth cycle and monitor quality and conditions**
- **Easily assign and manage plant ID tags and package tags**
- **Automate regulatory reporting with integrated data to your state reporting system**



# Cannabis Regulatory Tracking with ProcessPro

ProcessPro's Cultivation Management Solution (CMS), integrated with our comprehensive cannabis ERP solution, ensures your company maintains compliance with accuracy and integrity in reporting. The system automates the transfer of required reporting data collected throughout the growing, manufacturing, and production processes maintained in the ERP solution's centralized database. With its API to third-party regulatory systems that automates data synching, plant tracking and tracing can easily be managed.



Activity Type	Operation ID	Assembly ID	User ID	Start Date/Time	Stop Date/Time	Duration (dd:hh:mm)	Revision Number	Completed Manually	Reason
Order No. 00000948									
Order Requirement	Vegetation	PRPLKUSH-BD	DXE	1/3/2020 1:29 PM	1/3/2020 3:57 PM	00:02:27	A	<input type="checkbox"/>	
Order Requirement	Vegetation	PRPLKUSH-BD	DXE	4/11/2019 11:09 AM	4/11/2019 11:15 AM	00:00:06	A	<input type="checkbox"/>	
Order Requirement	Vegetation	PRPLKUSH-BD	DXE	3/13/2019 2:14 PM	3/13/2019 2:17 PM	00:00:03	A	<input type="checkbox"/>	
Order Requirement	Vegetation	PRPLKUSH-BD	DXE	5/2/2019 9:43 AM	5/2/2019 9:46 AM	00:00:02	A	<input type="checkbox"/>	
Order Requirement	Vegetation	PRPLKUSH-BD	KEVIN	3/13/2019 3:15 PM	3/13/2019 3:18 PM	00:00:02	A	<input checked="" type="checkbox"/>	Trimming
Order Requirement	Vegetation	PRPLKUSH-BD	DXE	1/27/2020 1:39 PM	1/27/2020 1:41 PM	00:00:01	A	<input type="checkbox"/>	
Order Requirement	Vegetation	PRPLKUSH-BD	DXE	10/7/2019 1:31 PM	10/7/2019 1:32 PM	00:00:01	A	<input type="checkbox"/>	

## Transactions for cannabis and regulatory tracking supported by the CMS:

- Planting batches with origination information - quantity, strain, potency, etc.
- Growth phases - validated multilevel growth stages
- Unique plant ID assignment and plant and package tag management
- Harvested plants packaged or in batches for production
- Waste identification throughout growing, harvesting, and production
- Bulk packages of buds and dried material with lot tracking at warehouse bin levels
- Test packages - secure QC status for testing by on-site or third-party labs
- Product packages for manufacturing and extraction
- On-hand inventory - raw materials and finished goods

With end-to-end tracking and transparency, you can produce a quality product in a safe market and retail environment with ProcessPro's cannabis ERP and its integration with regulatory tracking systems.